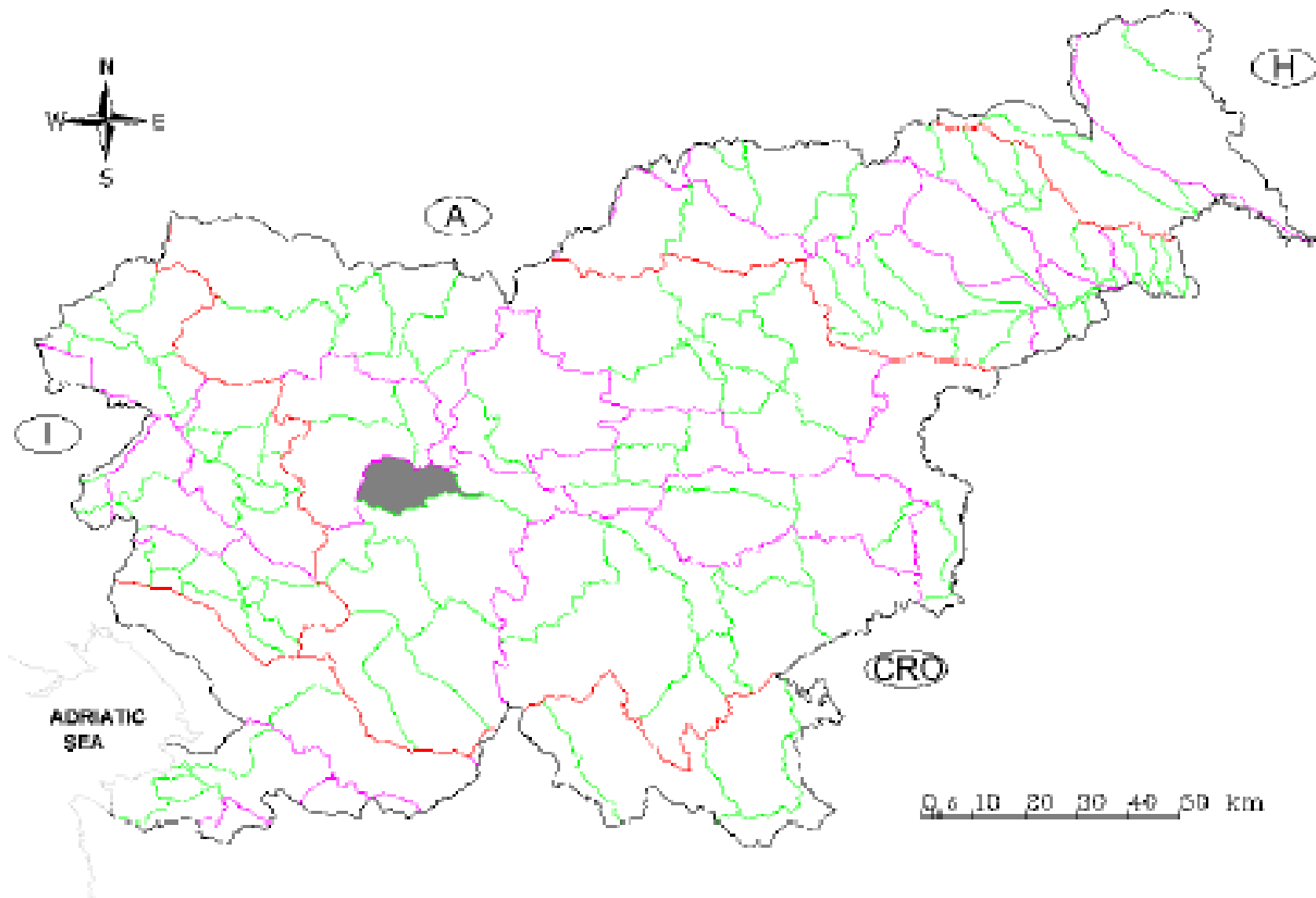




# Kuzlovec torrent

## Slovenia

[www.sedalp.eu](http://www.sedalp.eu)



Gradaščica river catchment on Slovenia map

## Kuzlovec torrent

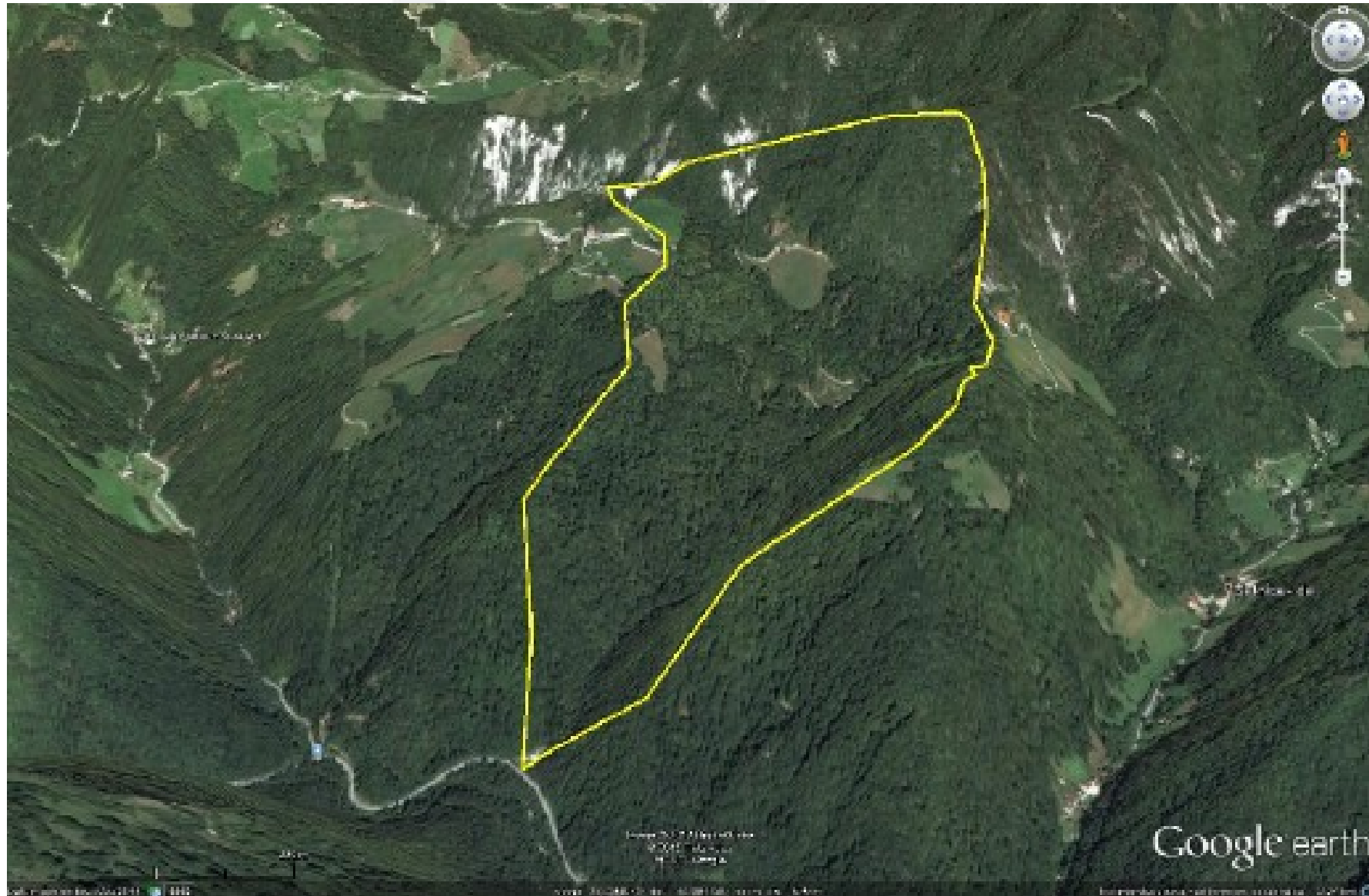
Catchment area (km <sup>2</sup> )	0.71
Minimum elevation (m a.s.l.)	394
Maximum elevation (m a.s.l.)	847
Average elevation (m a.s.l.)	631
Average slope (°, %)	46.5 – 105.3
Maximum slope (°, %)	27.3 – 51.6
Annual rainfall min – max (mm)	1600 - 1800
Exposition	SW
Water discharge measured min - max	NA

**Geology:** limestone, dolomite, sandy slate, Groden layers – red sandstone, alevrolite, slate and conglomerate

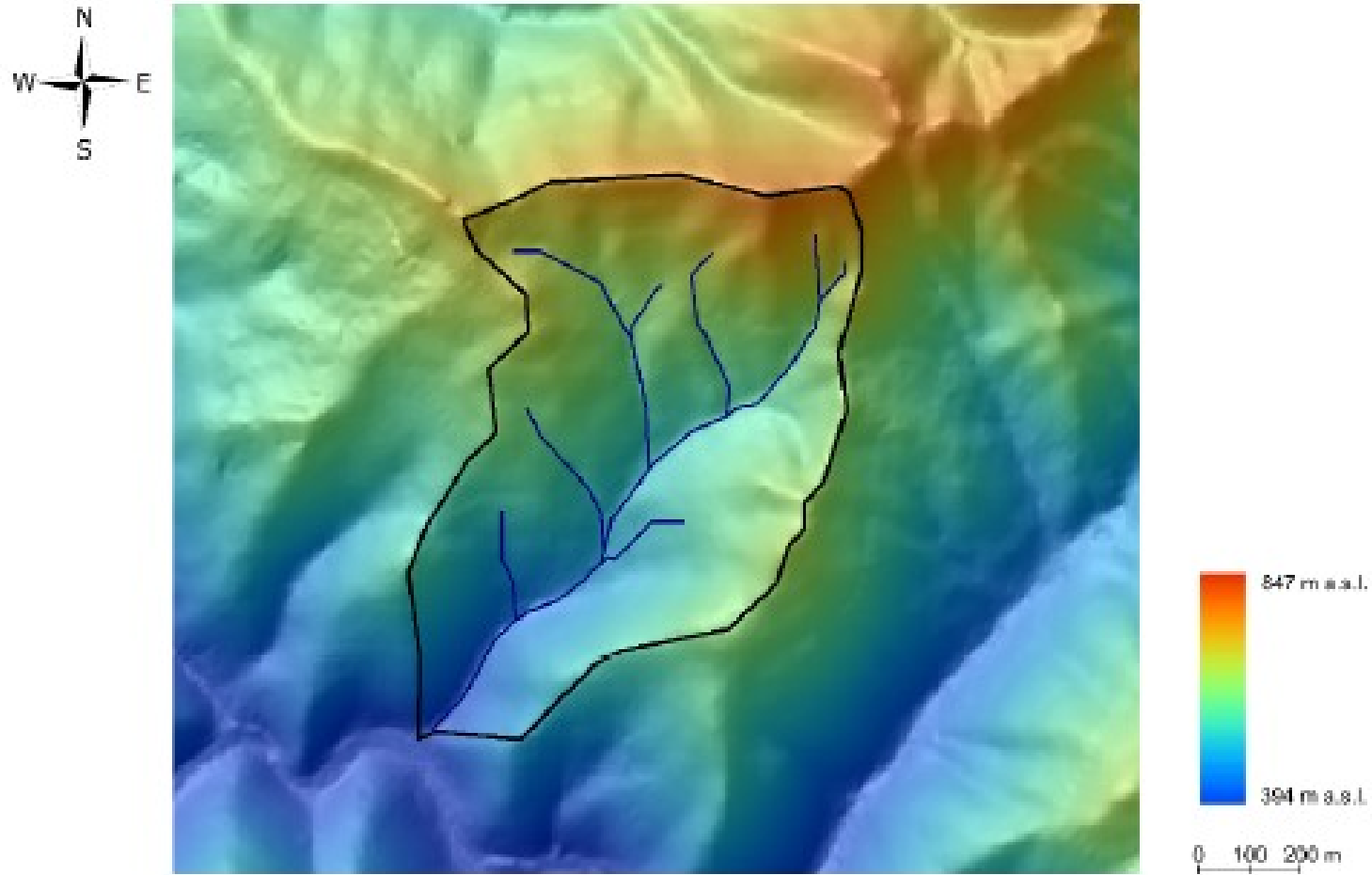
**Vegetation cover/land cover/land use/ :** broad-leaved forest, mixed forest, land principally occupied by agriculture, with significant areas of natural vegetation

**Soil (FAO type):** Rendzic Leptosol





Kuzlovec torrent catchment area



Kuzlovec catchment area DEM