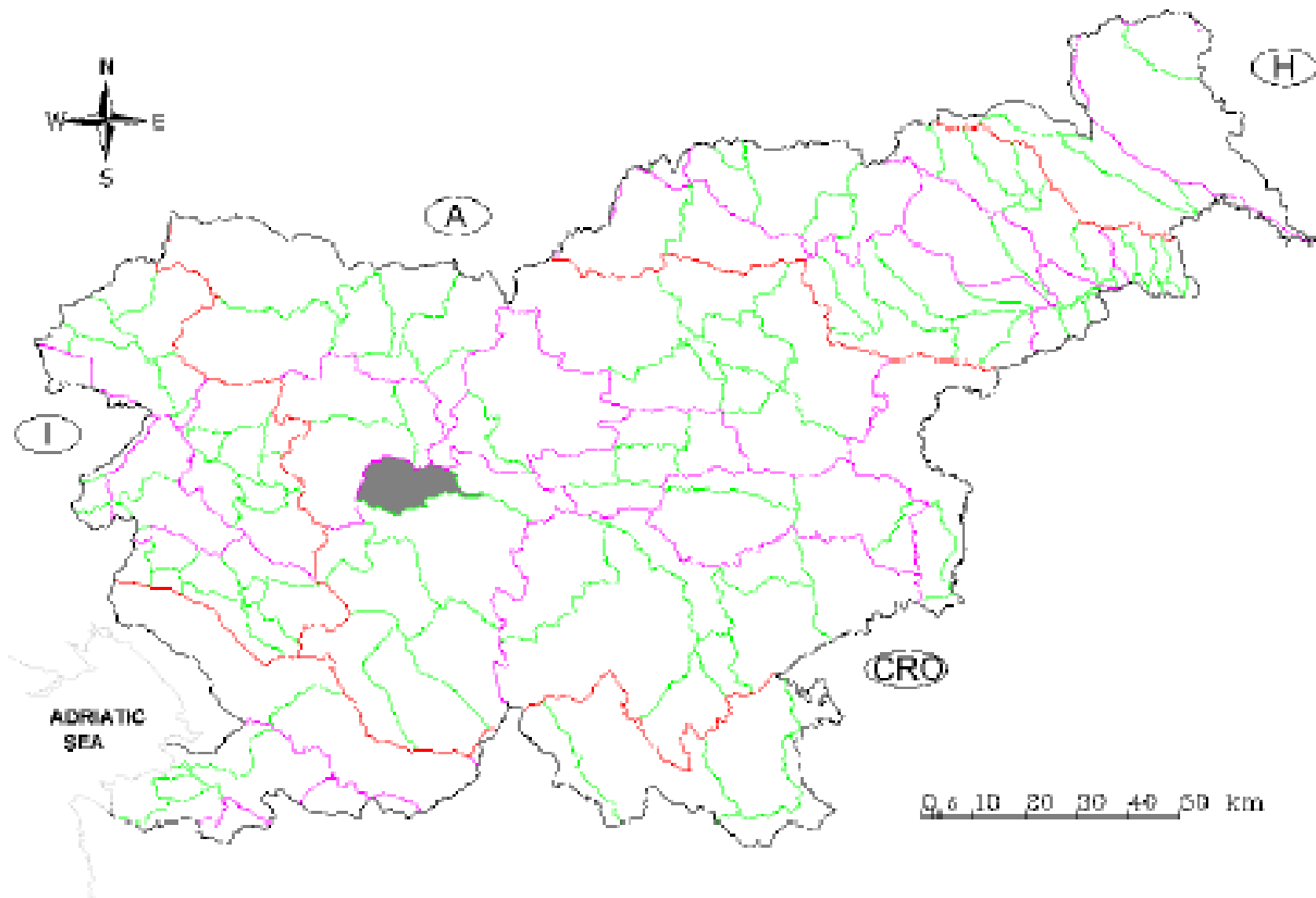




Gradaščica River Slovenia

www.sedalp.eu



Gradaščica river catchment on Slovenia map

Gradaščica River

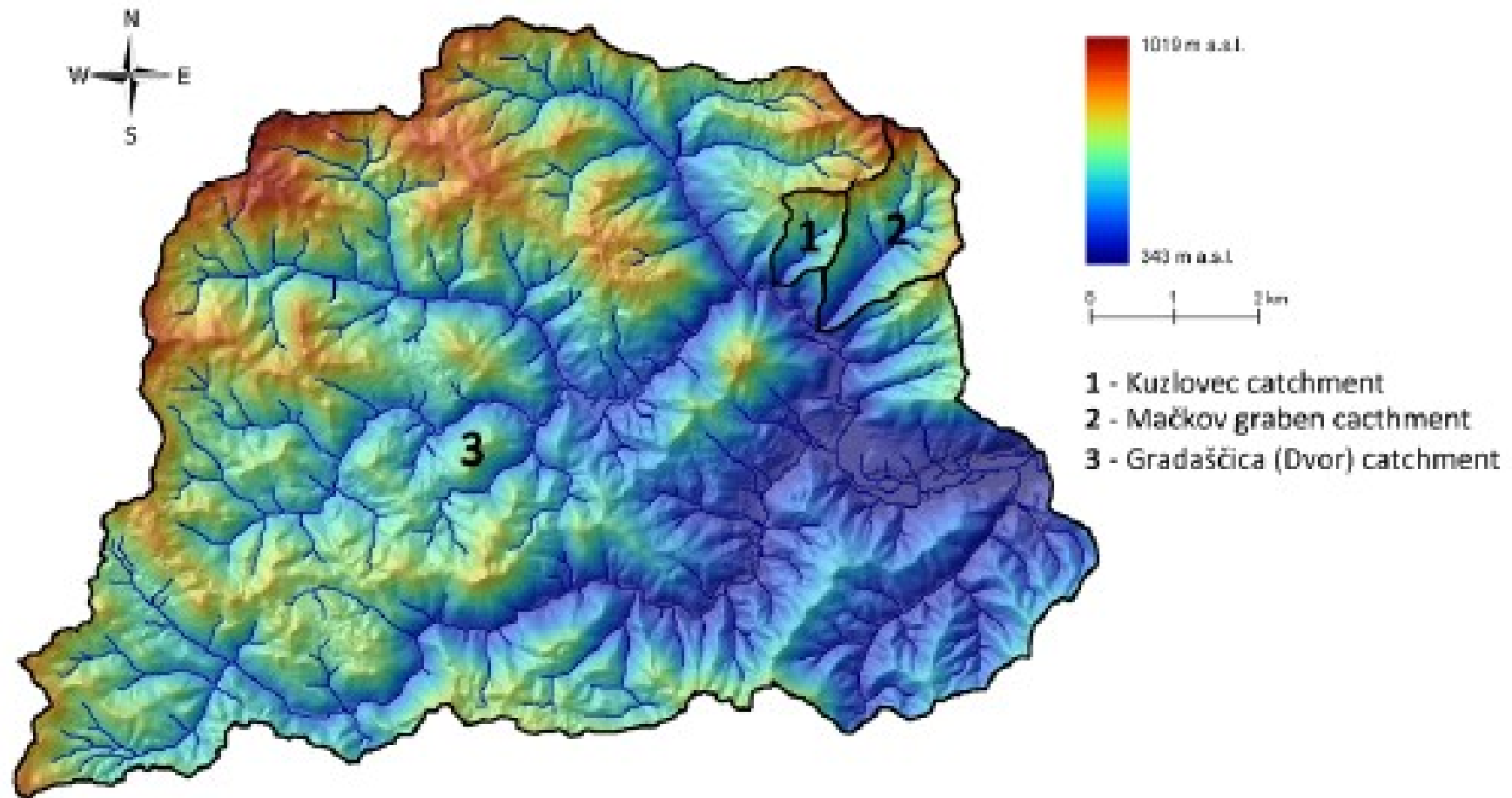
Catchment area (km ²)	158.82 (whole catchment); 78.83 (water station Dvor)
Minimum elevation (m a.s.l.)	343
Maximum elevation (m a.s.l.)	1019
Average elevation (m a.s.l.)	616
Average slope (°, %)	22 - 40.4
Maximum slope (°, %)	65.1 - 215
Annual rainfall min – max (mm)	1600 - 1800
Length of the main stream (km)	26.1 (whole catchment); 15.4 (water station Dvor)
Water discharge measured min - max	NA

Geology: limestone, dolomite, sandy slate, Groden layers – red sandstone, alevrolite, slate and conglomerate

Vegetation cover/land cover/land use/ : broad-leaved forest, mixed forest, land principally occupied by agriculture, with significant areas of natural vegetation, coniferous forest, pastures, complex cultivation patterns

Soil (FAO type): Rendzic Leptosol, Dystric and Eutric Cambisol, Chromic Cambisol, Eutric Fluvisol





Gradaščica river catchment area down to the water station Dvor