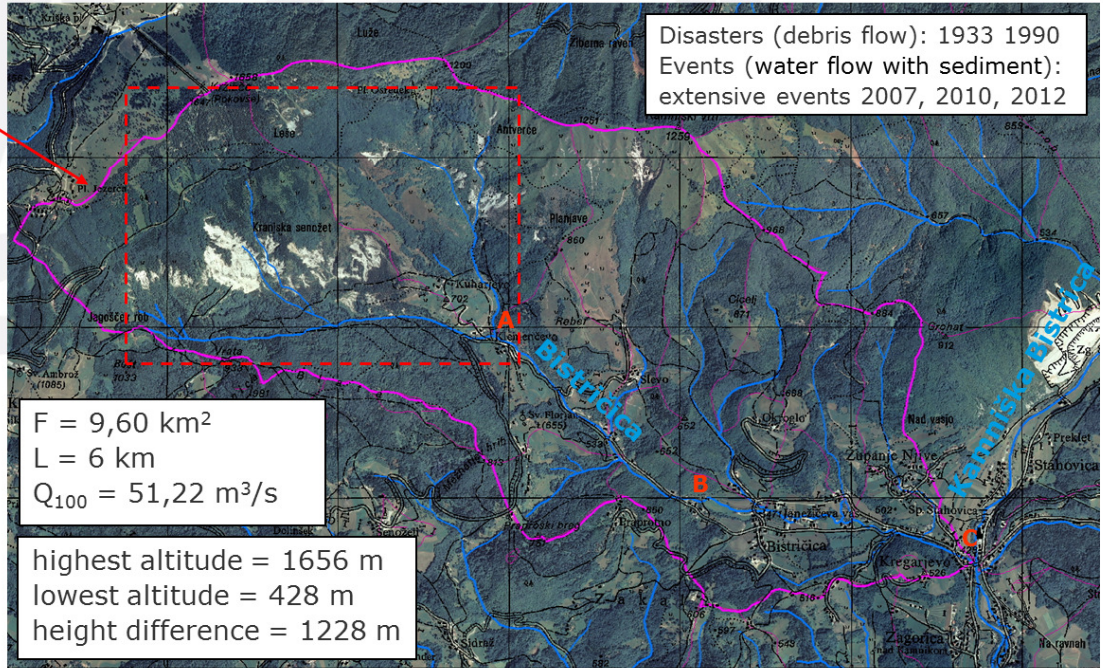
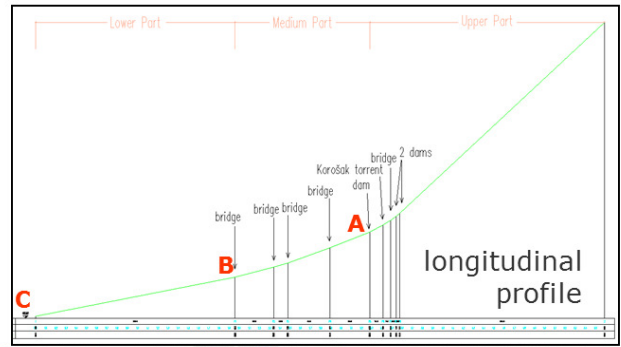




PP12 Testbed: Torrent catchment Bistričica

Slovenia

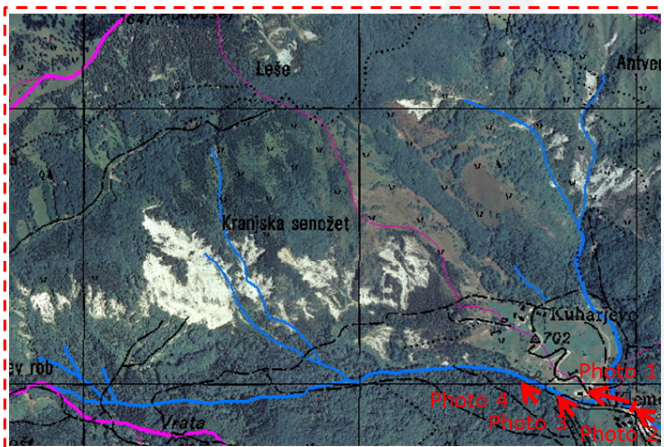


A - **sediment storage dam** under the upper part of catchment

B - sediment transport in the middle section

C - inflow in torrent river Kamniška Bistrica

PP12 Testbed: Torrent catchment Bistričica - situation in upper part



Accumulation behind the main sediment storage dam; in the background are erosion prone areas in the upper part of catchment (photo: J. Papež)



Main sediment storage dam



Two sediment / check dams



System of 5 check dams

PP12 Testbed: Torrent catchment Bistričica

- Main highlights of activities

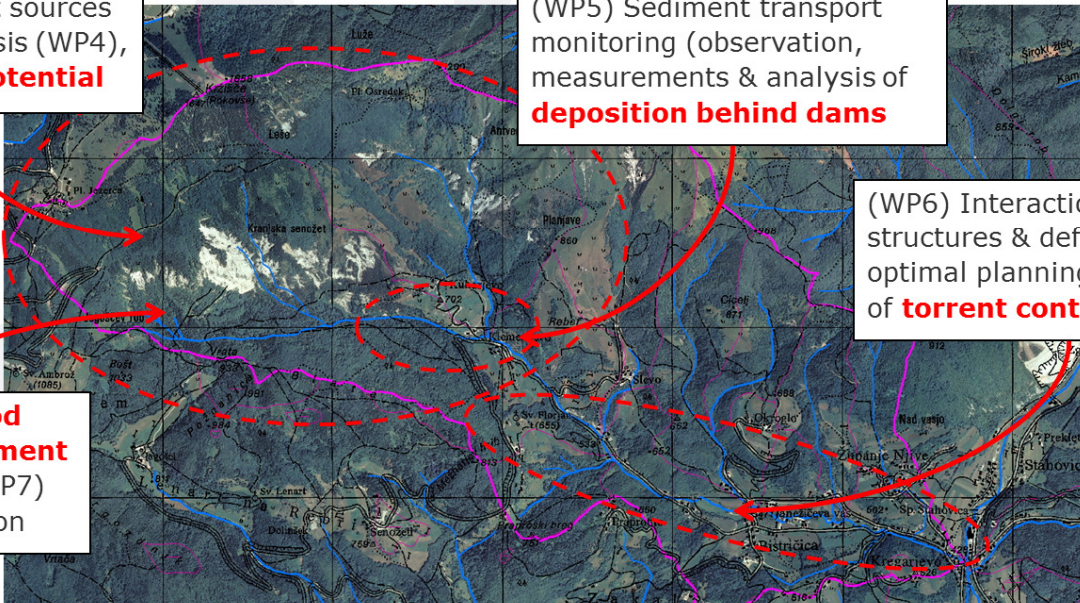
erosion, sediment sources
& historical analysis (WP4),
woody debris potential

(WP5) Sediment transport
monitoring (observation,
measurements & analysis of
deposition behind dams)

(WP6) Interactions with
structures & definition of
optimal planning and design
of **torrent control works**

Estimation of **wood
budget** and **sediment
management** (WP7)
flood risk mitigation

(WP8) Supporting political, administrative (Ministry) and local stakeholders
(**Municipality Kamnik**) to balance sediment management and support
River Basin Management Plans on local/regional and national level



PP12 Testbed: Torrent catchment Bistričica

- Input of woody debris

