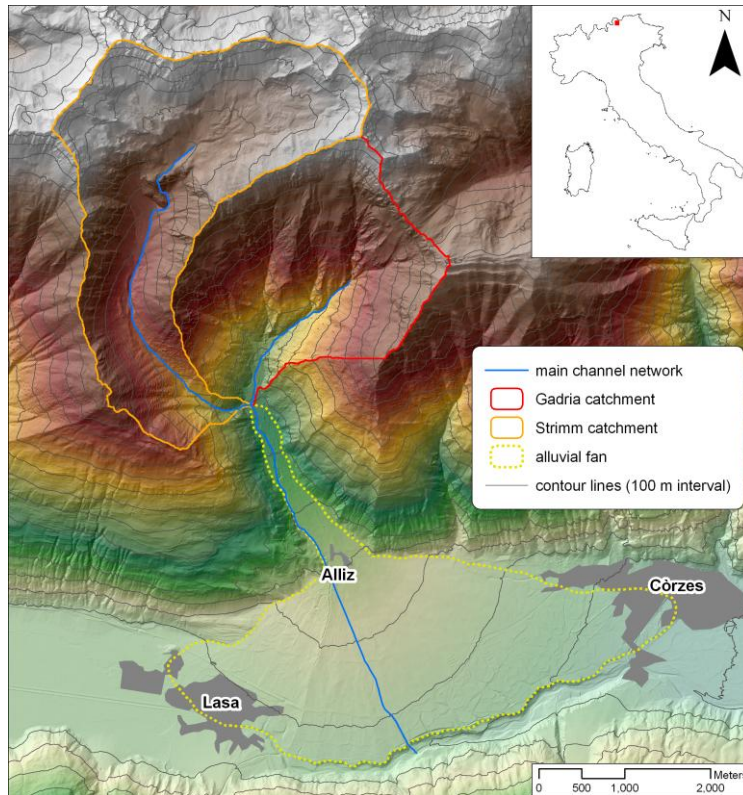


Strimm catchment monitoring site

The bedload transport monitoring system in the Strimm basin consists of raingauges, pressure transducers for water stage, RFID-tagged (by Passive Integrated Transponders, PIT) clasts and a portable PIT antenna. The monitoring equipment has been purchased and installed by the Free University of Bozen-Bolzano, apart from one raingauge installed by the department of Hydraulic Engineering of the Autonomous Province of Bozen-Bolzano. RFID-tagged clasts have been placed by the Free University of Bozen-Bolzano (subcontractor of PP1) and by the University of Milano-Bicocca (partner associated to PP4).



Location map of the Strimm catchment.

Principal morphometric parameters and descriptive data of the Strimm pilot area.

	Strimm
Basin area (km ²)	8.5
Minimum elevation (m a.s.l.)	1394
Mean elevation (m a.s.l.)	2484
Maximum elevation (m a.s.l.)	3197
Average slope (%)	61.8
Mean annual precipitation (mm)	500
Main geology	Mica-schist, gneiss, and phyllite

Images

