



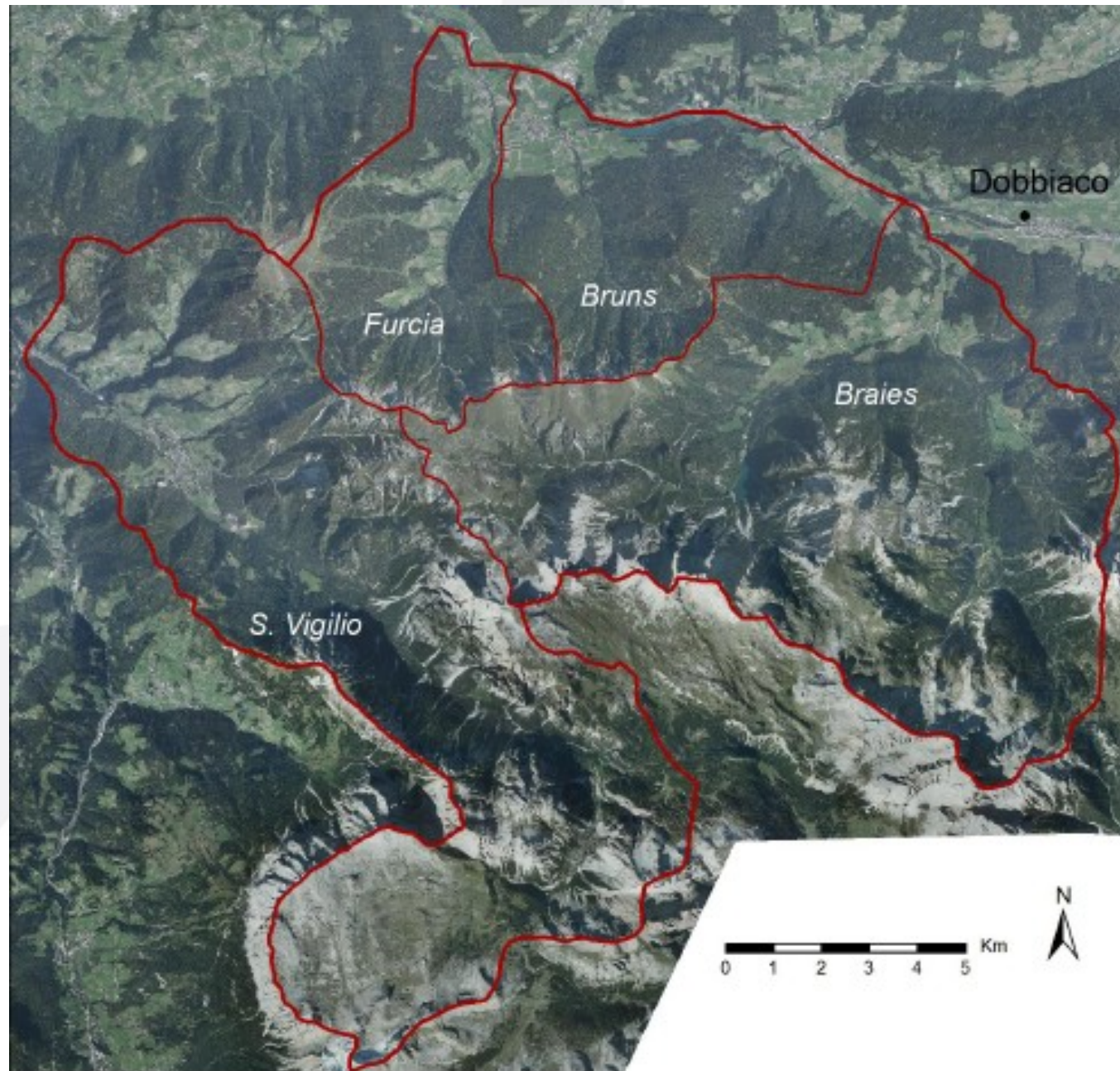
Pusteria Valley

Autonomous Province of Bolzano

www.sedalp.eu

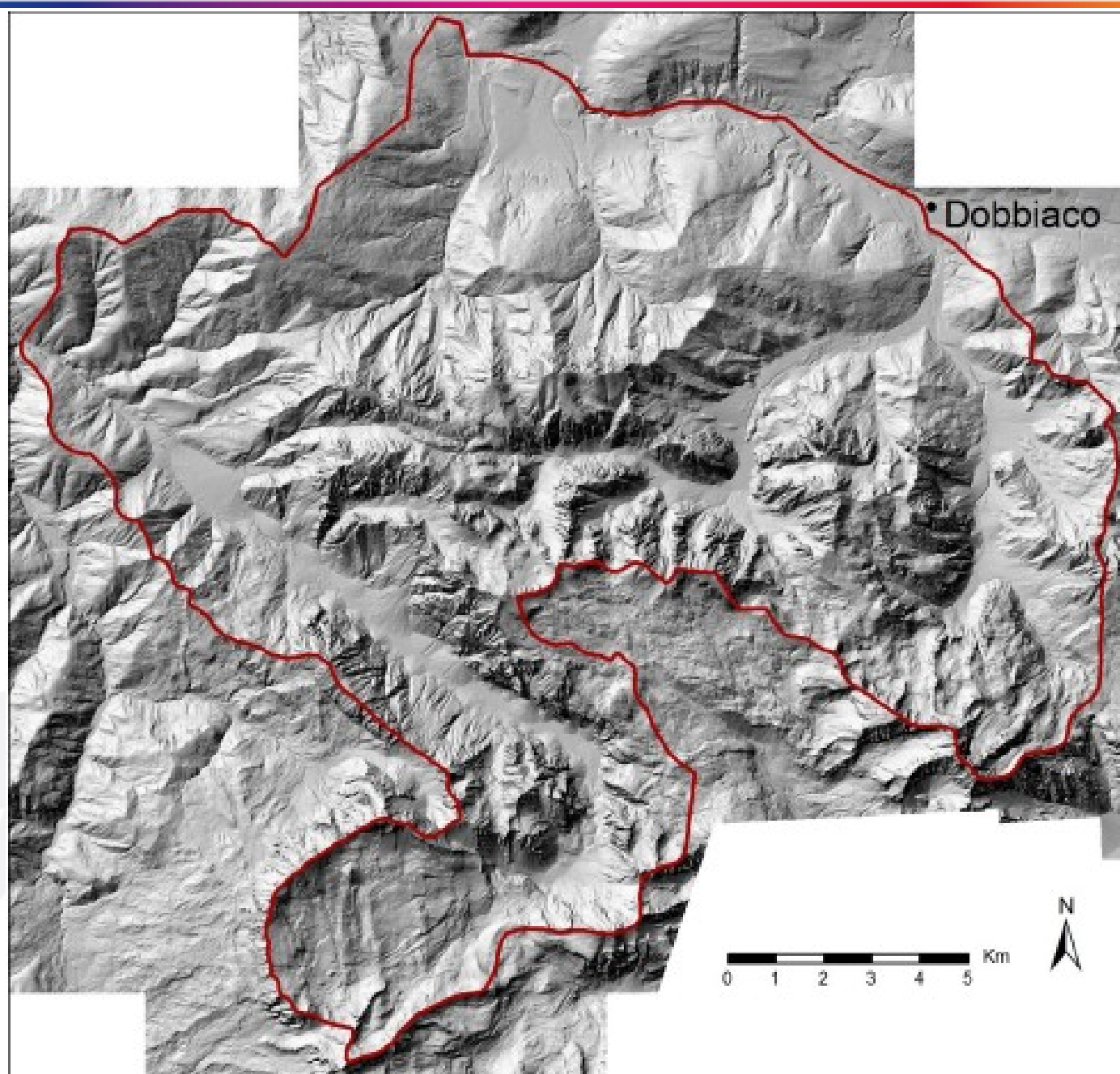
The study area includes a part of the Pusteria Valley (256 km²), located within the Autonomous Province of Bolzano, Italy. It consists of 4 basins ranging from 23 km² (Furcia basin) to 101 km² (San Vigilio basin).

These areas were overridden repeatedly by the Alpine Ice Cap during the Pleistocene and has such have inherited morphological and sedimentological characteristics typical of glaciated environments. Today no glaciers are present in the portion of the Pusteria Valley under consideration



Pustria Valley	
Basins included	4
Drainage area (km ²)	253
Main river basin	Rienza river
Maximum elevation (m a.s.l.)	3144
Minimum elevation (m a.s.l.)	84
Annual rainfall min – max (mm)	750 - 900

Geology: sedimentary rocks, mainly dolostone



Shaded relief of the study area within Pusteria Valley