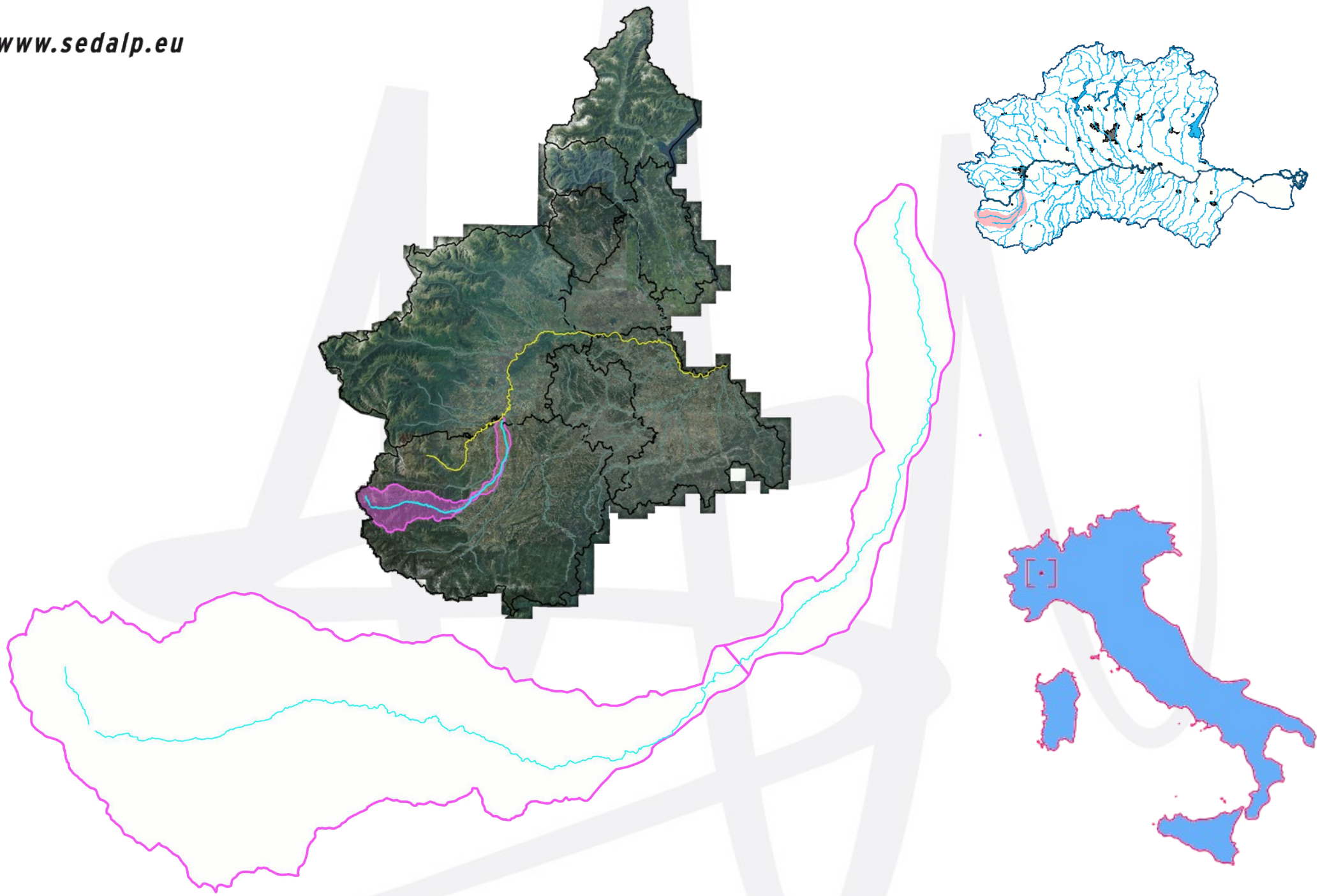




**Maira Basin  
Piemonte Region  
Province of Cuneo**

[www.sedalp.eu](http://www.sedalp.eu)





Basin	MAIRA river
Total drainage area	1212 km <sup>2</sup> (2% of Po basin)
Total range of elevation	3471 – 231 m s.l.m.
Lenght	105 km
Annual mean rainfall	905 mm
Annual mean water flow	11 m <sup>3</sup> /s
Annual mean temperature	8 °C





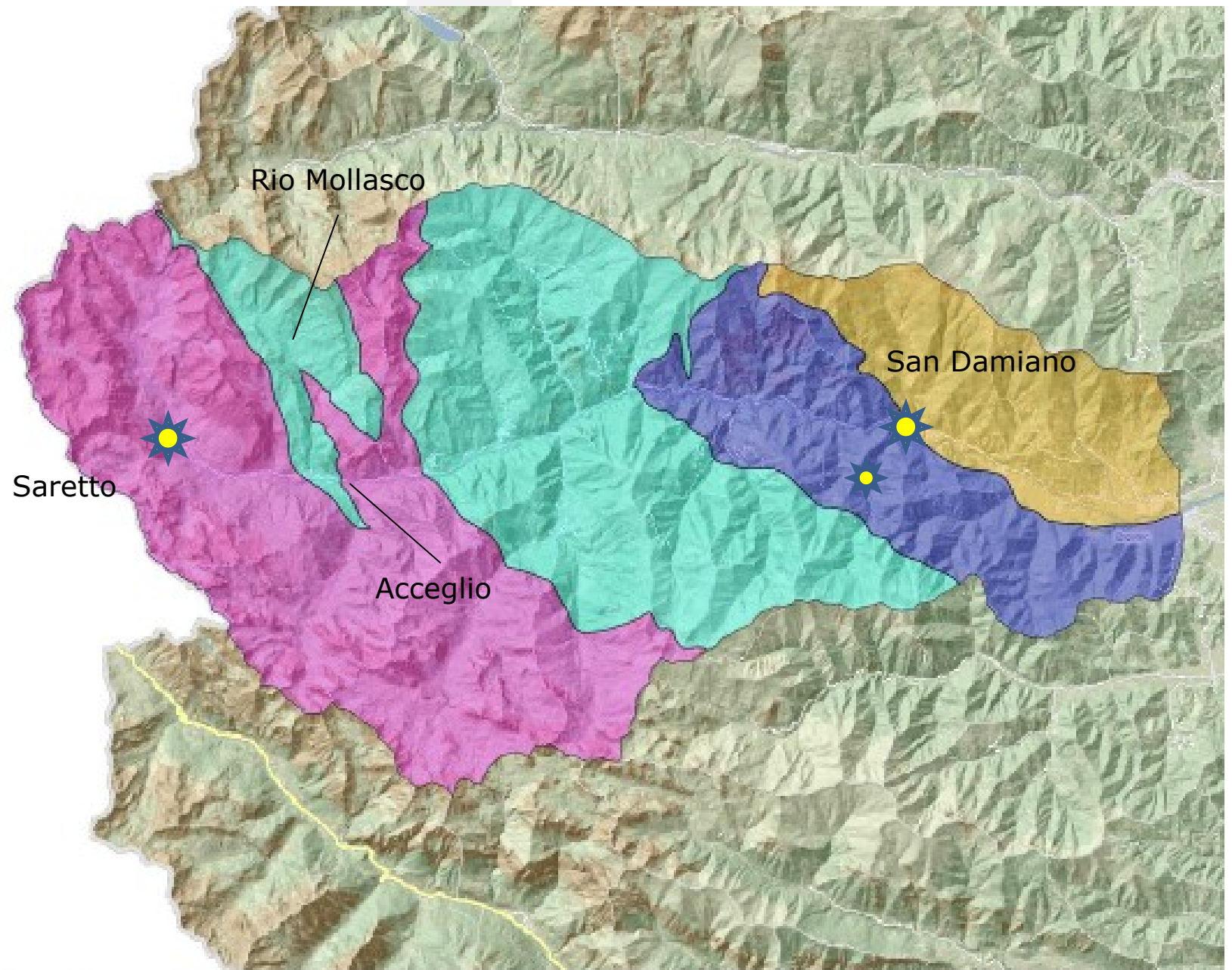
## Study area

Basin	Maira mountain river
Study area drainage surf.	660 km <sup>2</sup>
Lenght	41 km
Range of elevation	3471 – 622 m a.s.l.

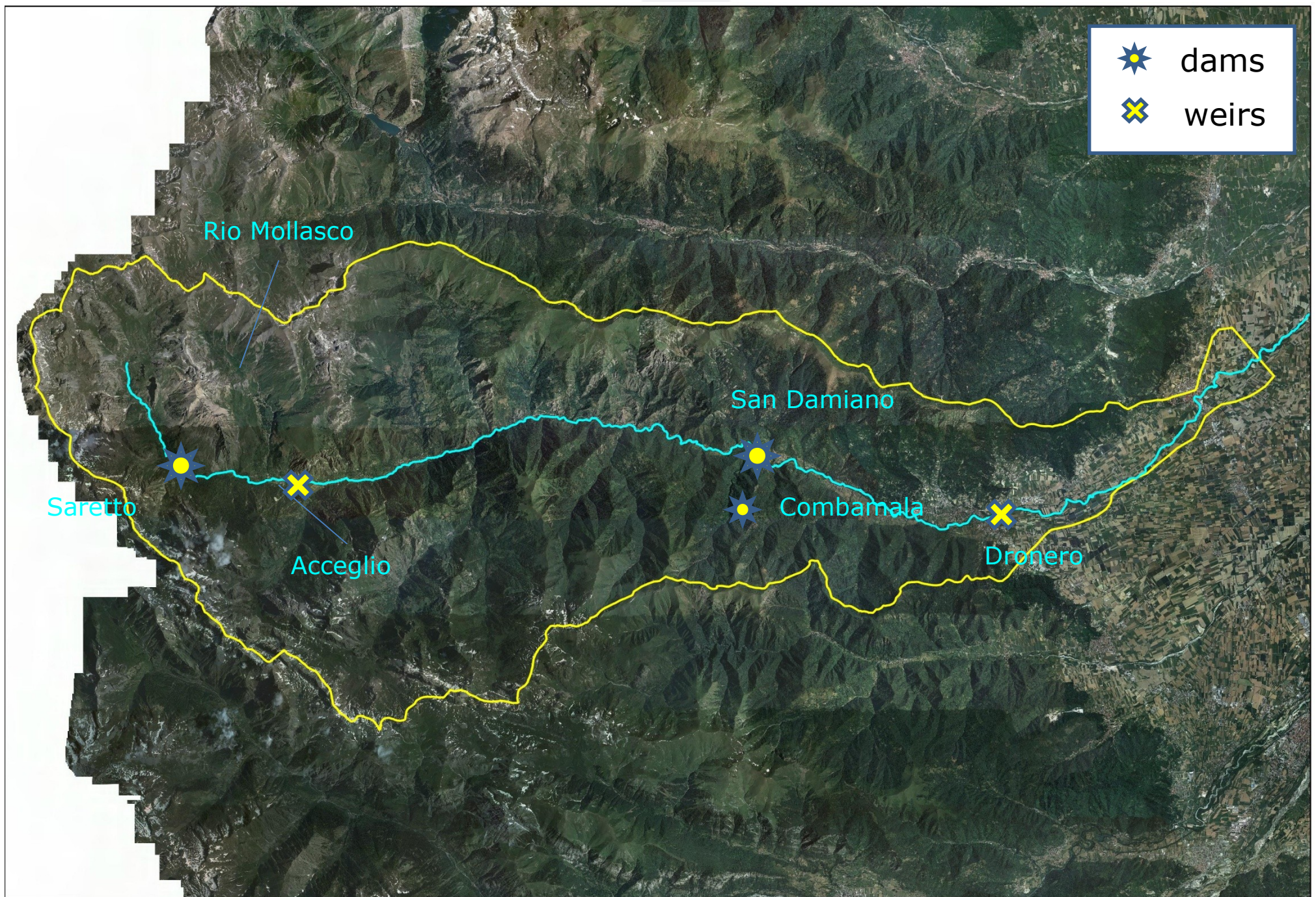




# Geology







***Sediment management in Alpine basins***



Saretto reservoir	
Max volume	150.000 m <sup>3</sup>
Dam elevation	9,05 m
Reservoir basin area	53,8 km <sup>2</sup>



## San Damiano reservoir

Max volume

570.000 m<sup>3</sup>

Dam elevation

16,5 m

Reservoir basin area

441 km<sup>2</sup>





## Combamala reservoir

Max volume	400.000 m <sup>3</sup>
Dam elevation	35 m
Reservoir basin area	10,3 km <sup>2</sup>





## **Weirs**



**Acceglio - Granpianusso**





**Dronero**





***Sediment management in Alpine basins***



## Mollasco basin



- Left Maira river tributary at the head of the basin in Acceglio
- Basin surface: 31 km<sup>2</sup>
- Control structures: n. 66; 5 little bridges













***Sediment management in Alpine basins***



## **Work tools**

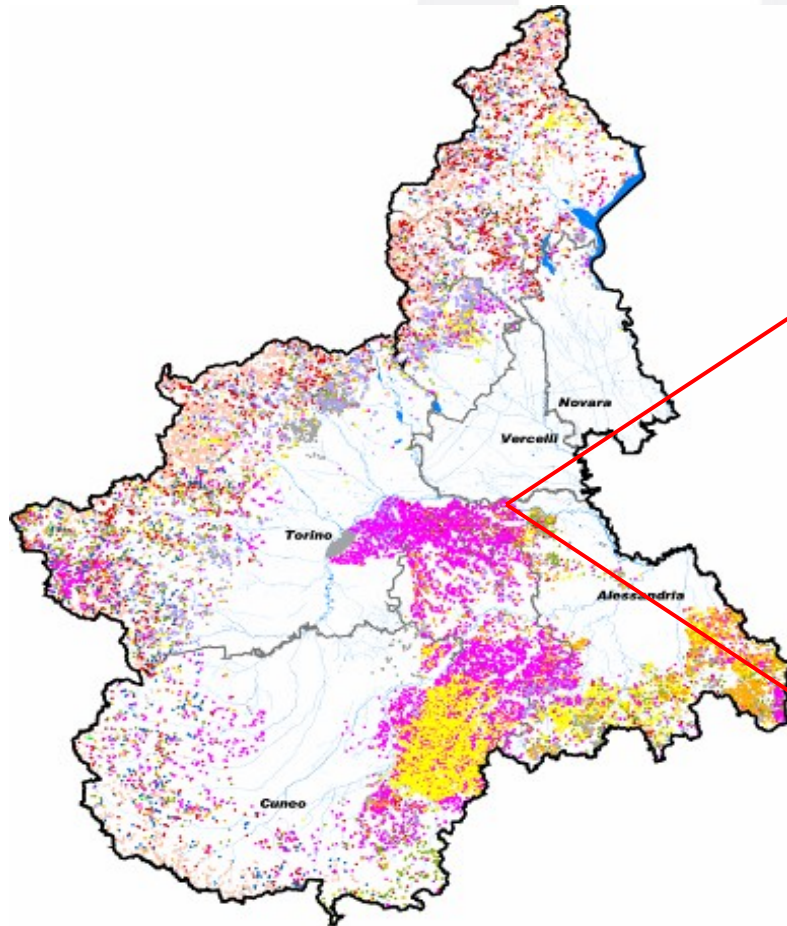
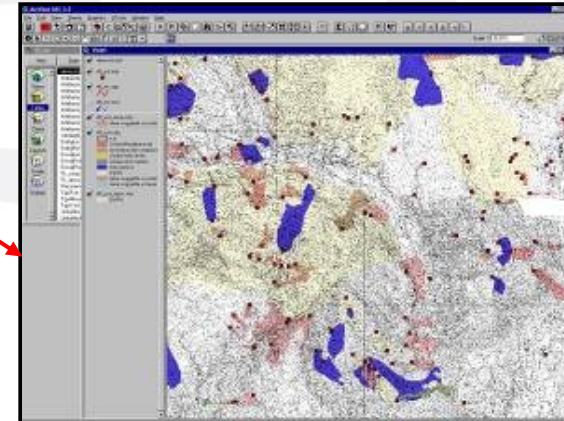
- IFFI project
- Regione Piemonte sediment management program
- Management projects of sediments inside dam reservoirs





# The Piemonte landslide inventory

[http://webgis.arpa.piemonte.it/elenco\\_servizi/index.html](http://webgis.arpa.piemonte.it/elenco_servizi/index.html)

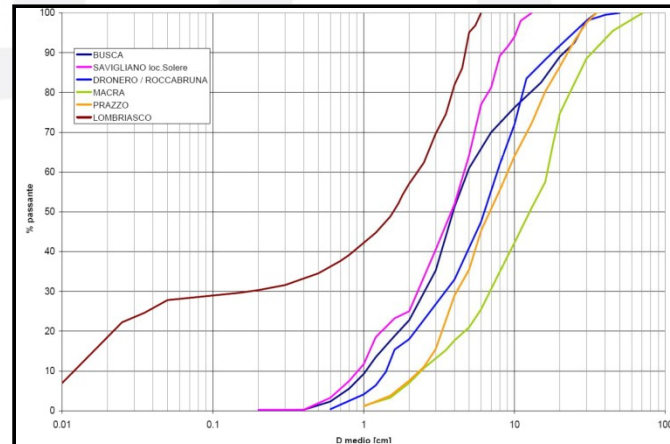
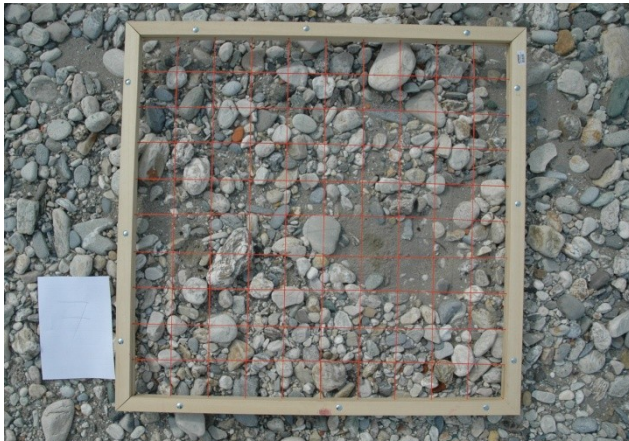
A screenshot of the webGIS interface showing a data entry form for a landslide inventory record. The form is titled "Scheda 1° Livello" and includes fields for "ID Prana", "ID", "Sigla", and "Data". It also has sections for "Localizzazione" (Region, Province, Comune, Autorità di Bacino, Toponimo IGM) and "Descrizione" (Data, Completamento, Mappa). The form is designed for data entry and includes a "Salva" button at the bottom.

~ 35 000 mapped landslides at 1:10000 scale  
(out of ~ 460 000 over all Italy)



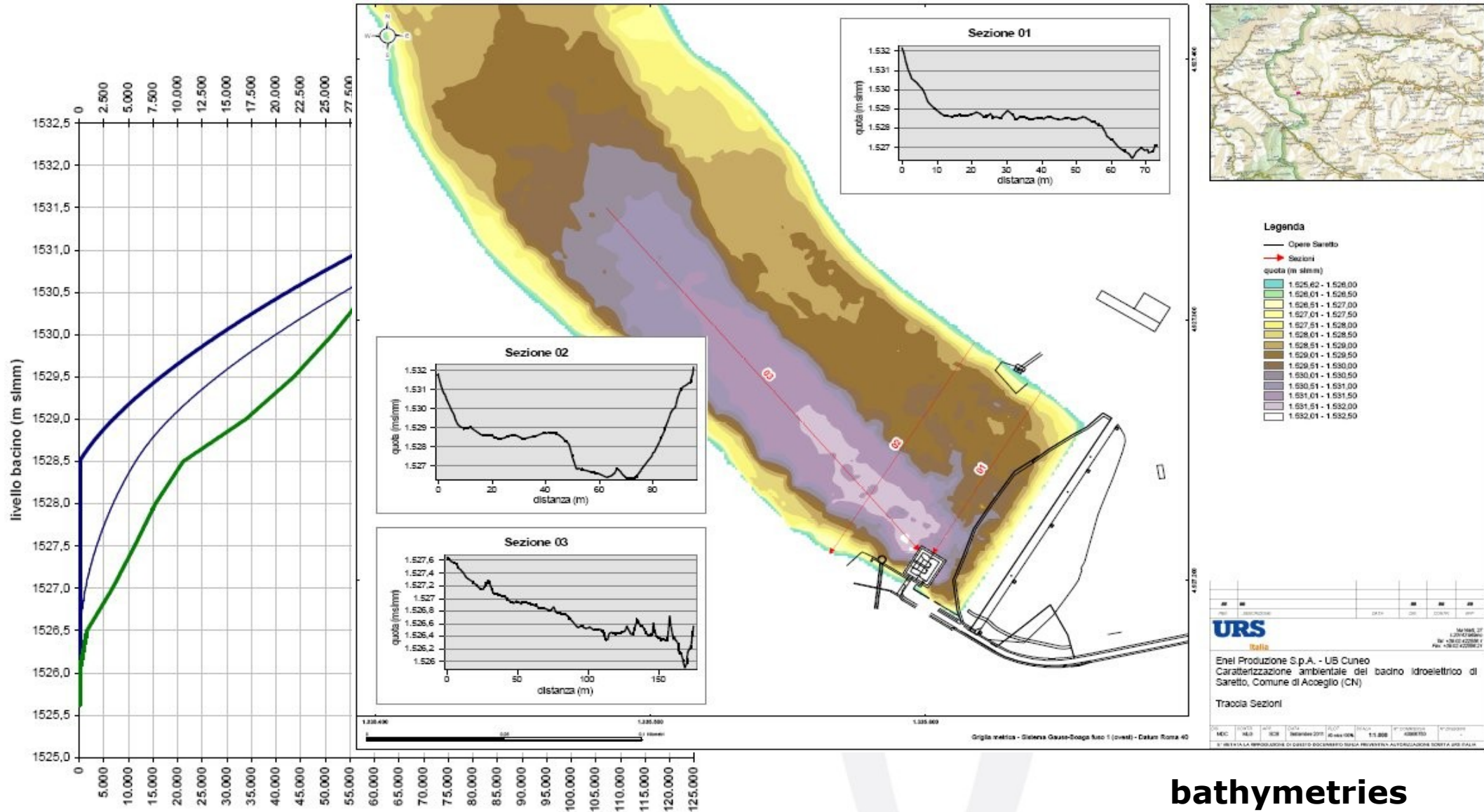
## Sediment management program

- Hydraulic analysis
- Reconstruction of morphological evolution
- Sediment characterization





# From management reservoirs projects



bathymetries