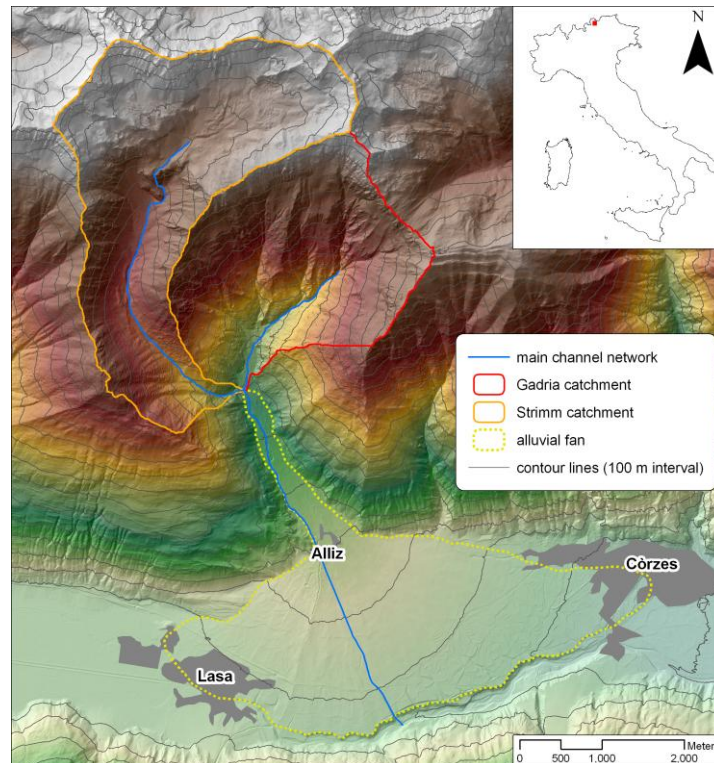


Gadria catchment monitoring site

The Gadria basin is a small catchment subjected to frequent debris flows equipped in 2011 for both monitoring purposes and testing warning systems. The monitoring system in the basin consists of raingauges, radar sensors, geophones, videocameras, piezometers and soil moisture probes. Most of the monitoring equipment has been purchased and installed by the department of Hydraulic Engineering of the Autonomous Province of Bozen-Bolzano, with some instruments acquired and maintained by the Free University of Bozen-Bolzano. The Gadria catchment is a pilot area for PP1 (Autonomous Province of Bozen-Bolzano) and PP4 (CNR IRPI).



Location map of the Gadria catchment.

Principal morphometric parameters and descriptive data of the Gadria pilot area.

	Gadria
Basin area (km ²)	6.26
Minimum elevation (m a.s.l.)	1394
Mean elevation (m a.s.l.)	2119
Maximum elevation (m a.s.l.)	2945
Average slope (%)	79.1
Mean annual precipitation (mm)	500
Main geology	Mica-schist, gneiss, and phyllite

Images



Publications

Comiti F., Macconi P., Marchi L., Arattano M., Borga M., Brardinoni F., Cavalli M., D'Agostino V., Hellweger S., Trevisani S., Vischi M., 2010. Debris flow monitoring and warning systems: a new study site in the Alps. WG F Thematic Workshop on Implementation of the Floods Directive 2007/60/EC - "FLASH FLOODS AND PLUVIAL FLOODING" - 26th – 28th May 2010, Cagliari, Italy, 10 pp.