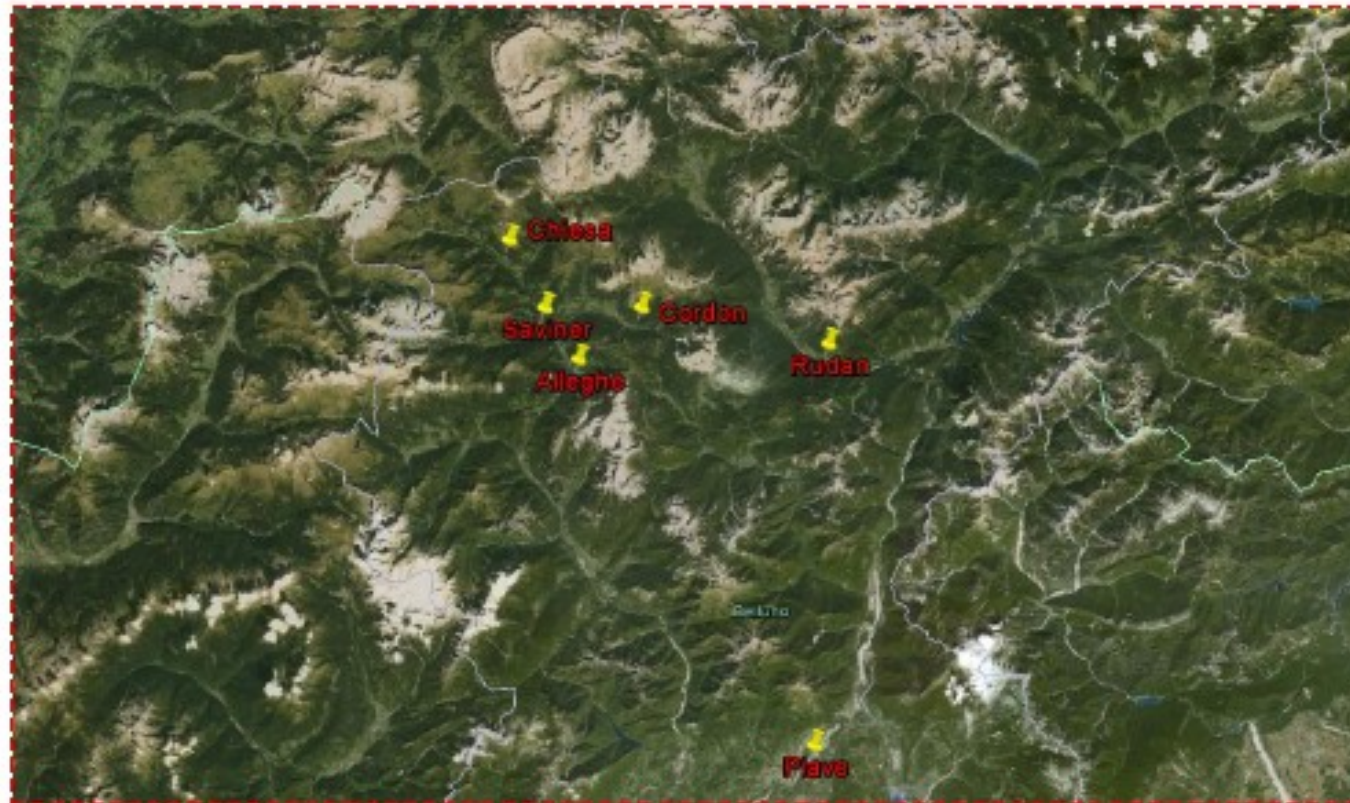




**Rio Cordevole**  
**Veneto region**  
**Belluno province**

[www.sedalp.eu](http://www.sedalp.eu)

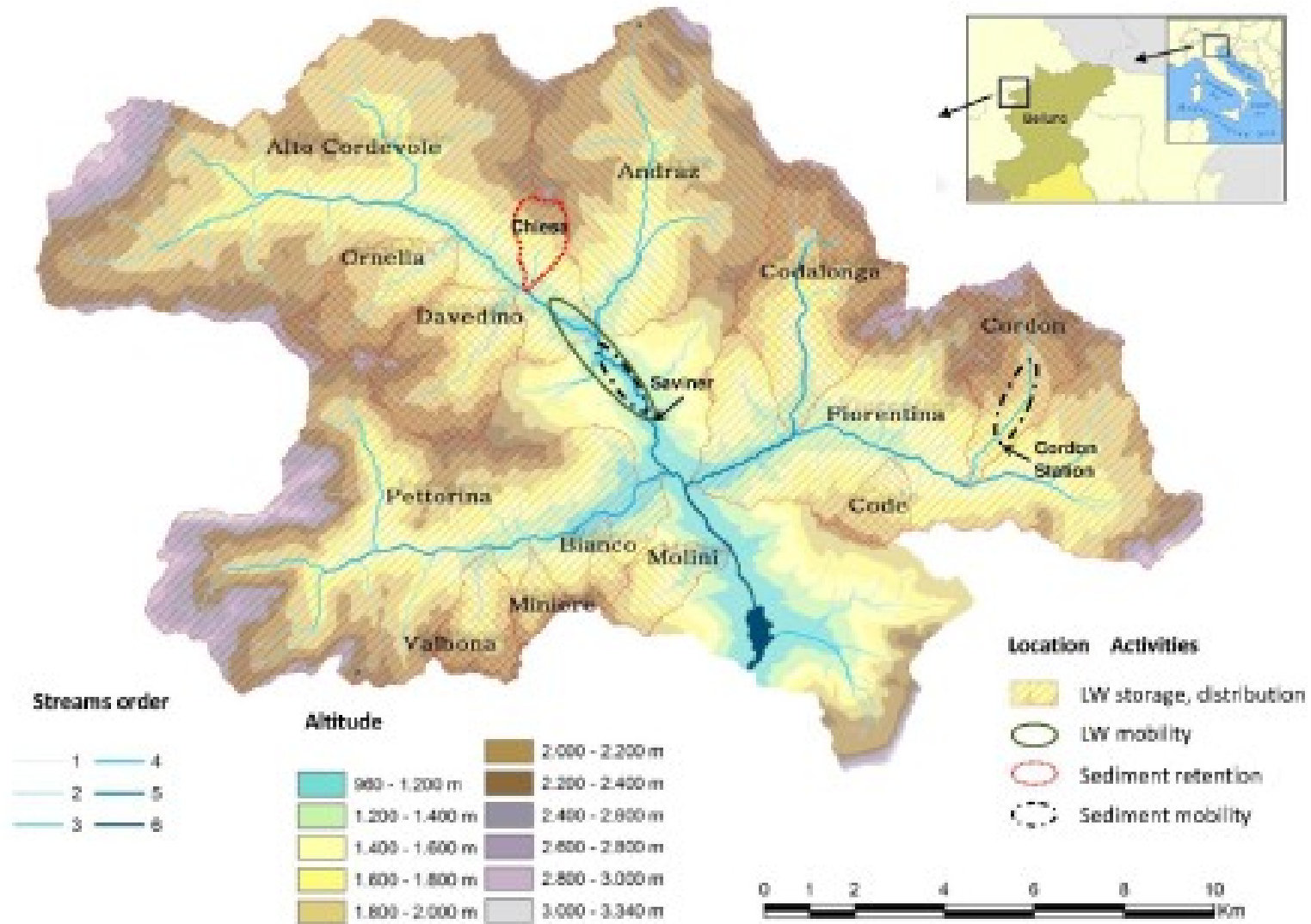


## **Rio Cordevole at Saviner**

Catchment area (km <sup>2</sup> )	109.47
Minimum elevation (m a.s.l.)	1014
Maximum elevation (m a.s.l.)	3141
Average elevation (m a.s.l.)	1902
Mean catchment gradient (%)	25.9
Length of river network (km)	143.8
Exposition	S-SE
Melton index	0.18



# Cordevole at Alleghe Lake



**Rio Cordevole at Alleghe Lake**

Catchment area (km <sup>2</sup> )	246
Minimum elevation (m a.s.l.)	960
Maximum elevation (m a.s.l.)	3340
Average elevation (m a.s.l.)	1857
Mean catchment gradient (%)	28.5
Length of river network (km)	337
Length of main stream (Km)	23
Shape index (Gravelius)	2.27
Annual precipitation (mm)	1100 (35% snow)
Average temperature (°C)	2

**Geology:** dolomite, limestones, quaternary deposits

**Vegetation cover:** Picea Abies, Larix Decidua (43% of the catchment)

