

PP6 Bavarian Environment Agency - WP 4 - Study sites

External Expert: Catholic University of Eichstaett-Ingolstadt - Chair of Physical Geography

Study site 3 - Schronbach

Name	Schronbach Valley
Country/Region/Province	Germany/ Bavaria/ Bad Tölz
Drainage area (km ²)	Ca. 8,6km ²
Main torrent	Schronbach
Range of elevation (m)	730- 1200m
Geology (dominant rocks)	dolomite, pleistocene sediment
Investigated components of the sediment cascade	sediment production
Investigated geomorphic processes	landslide / debris flow / erosion

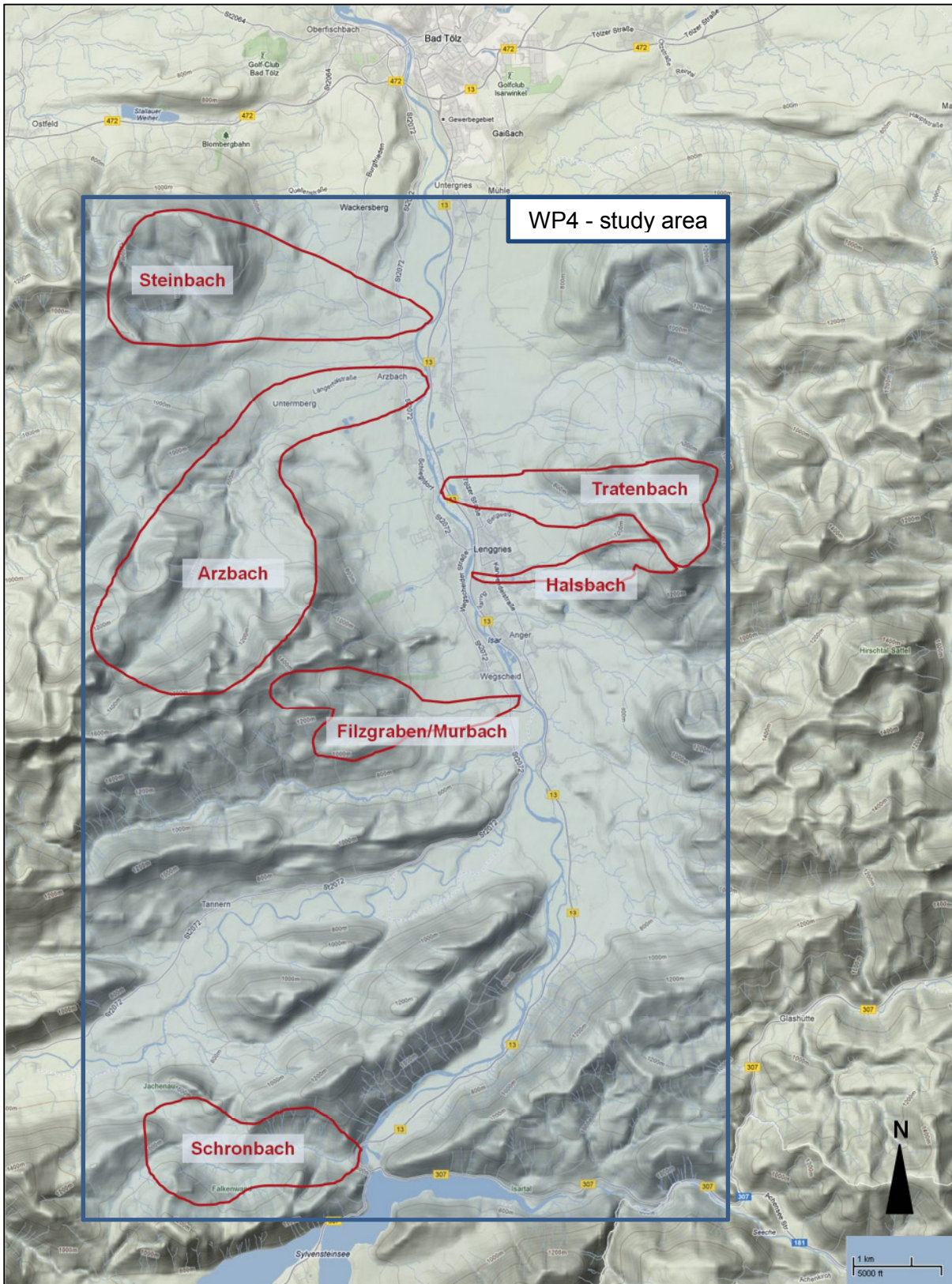


fig. 1: WP4-study area and catchment areas of the investigated torrents (map based on Google Maps)