

## PP6 Bavarian Environment Agency - WP 4 - Study sites

External Expert: Catholic University of Eichstaett-Ingolstadt - Chair of Physical Geography

### Study site 4 - Arzbach

Name	Arzbach Valley
Country/Region/Province	Germany/ Bavaria/ Bad Tölz
Drainage area (km <sup>2</sup> )	13km <sup>2</sup>
Main torrent	Arzbach
Range of elevation (m)	660- 1350m
Geology (dominant rocks)	dolomite, pleistocene and jurassic material
Investigated components of the sediment cascade	sediment production / sediment storage
Investigated geomorphic processes	landslide / debris flow / bedload transport / erosion

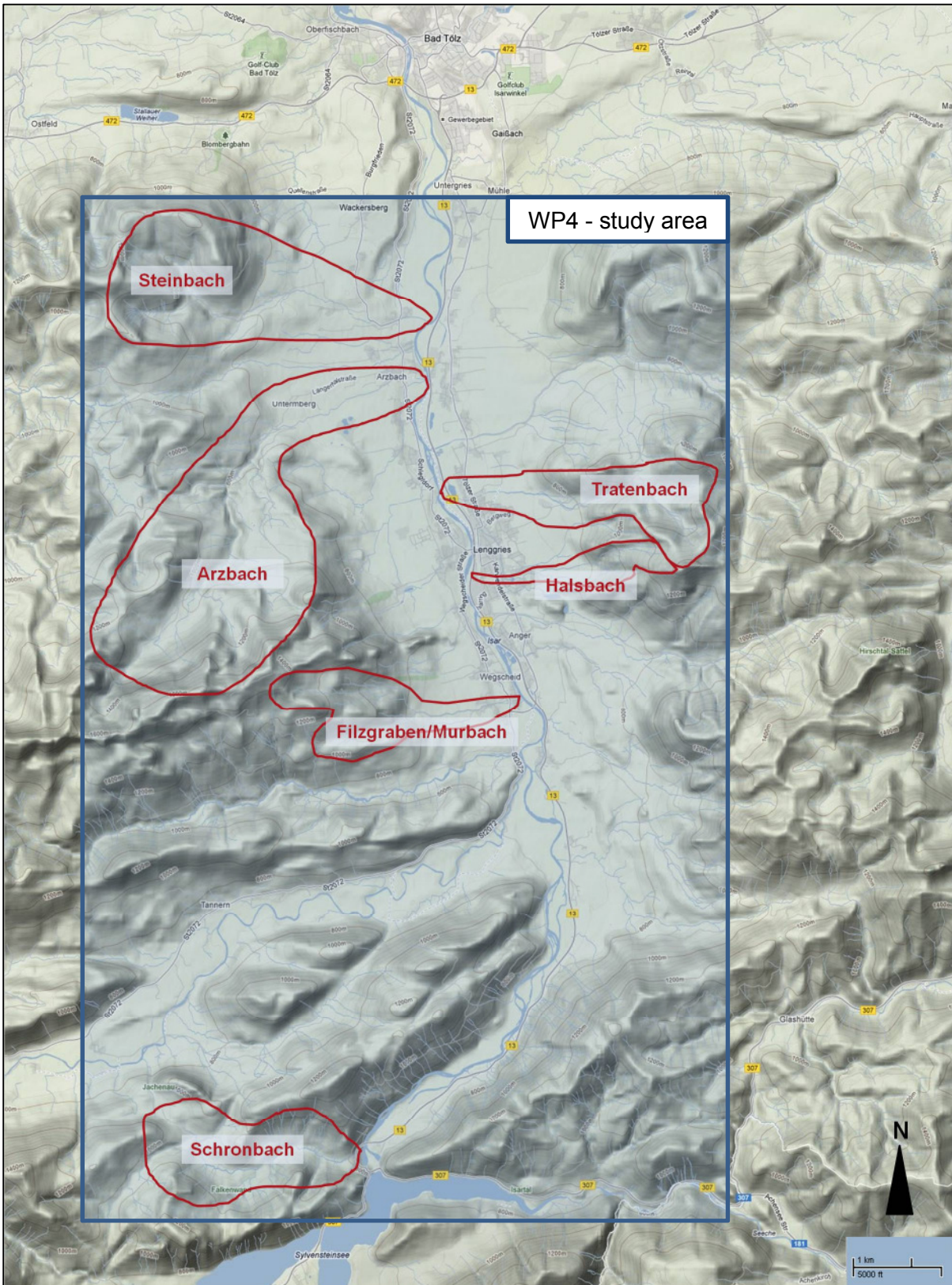


fig. 1: WP4-study area and catchment areas of the investigated torrents (map based on Google Maps)