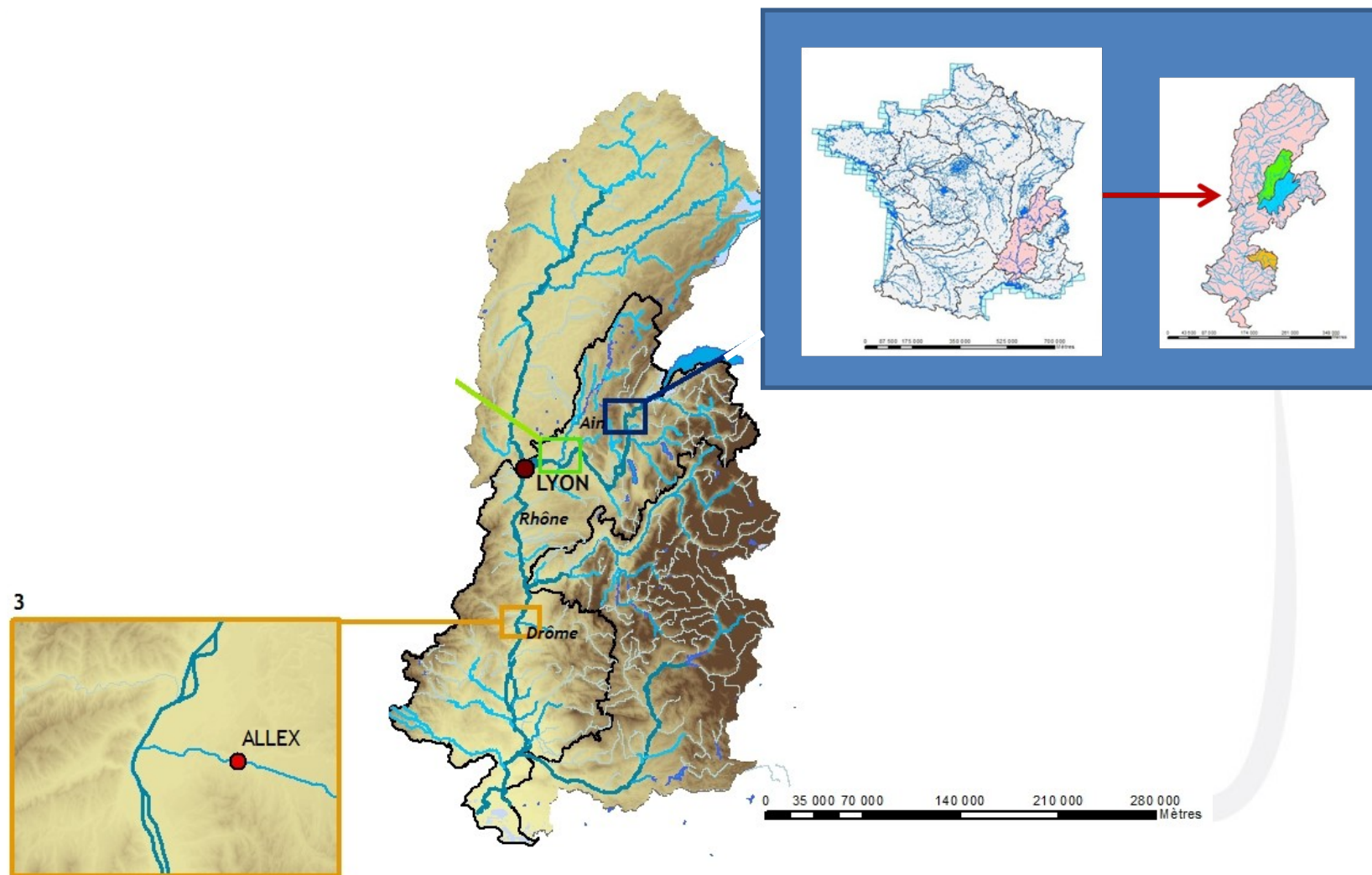




Monitoring wood transport station of **ALEX BRIGDE,** Lower Drôme River

www.sedalp.eu



Lower Drôme River



Sediment management in Alpine basins

Configuration of this site (still in process):

- Until 20 images/second (9 AM to 6 PM)
- Two cameras : AXIS 211 : 640*480 pixels
and M114 : 1 280*800 pixels
- Transmitted to ENS server by ADSL
- Archived in office

Some references :

- Moulin B., Piégay H., 2004. « Characteristics and temporal variability of Large Woody Debris stored in the reservoir of Genissiat, Rhône : elements for river basin management ». River Research and Applications, 20: 79-97.
- MacVicar B.J., Piégay H., Henderson A., Comiti F., Oberlin C., Pecorari E., 2009. Quantifying the temporal dynamics of wood in large rivers:field trials of wood surveying, dating, tracking, and monitoring techniques. Earth Surface Processes and Landforms. **34 (15) :2031 – 2046**
- MacVicar B., Piégay H., 2012. Implementation and validation of video monitoring for wood budgeting in a wandering piedmont river. Earth Surface Processes and Landforms.Wiley Online Library. DOI: 10.1002/esp.3240