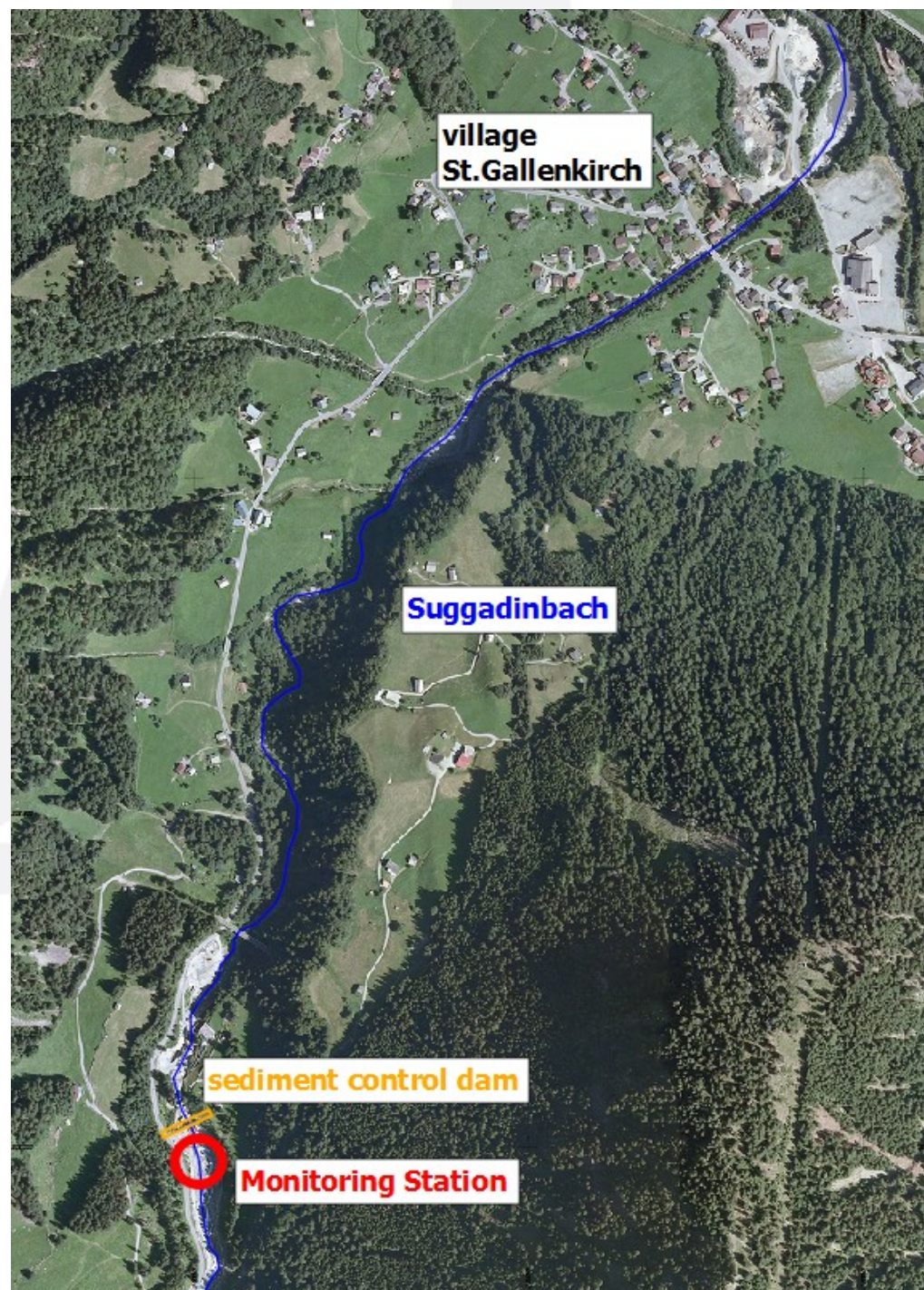




The Monitoring Station in the Suggadinbach

The Monitoring Station in the Suggadinbach is situated in Austria, in the south of Vorarlberg, in the village of St. Gallenkirch.





Geology

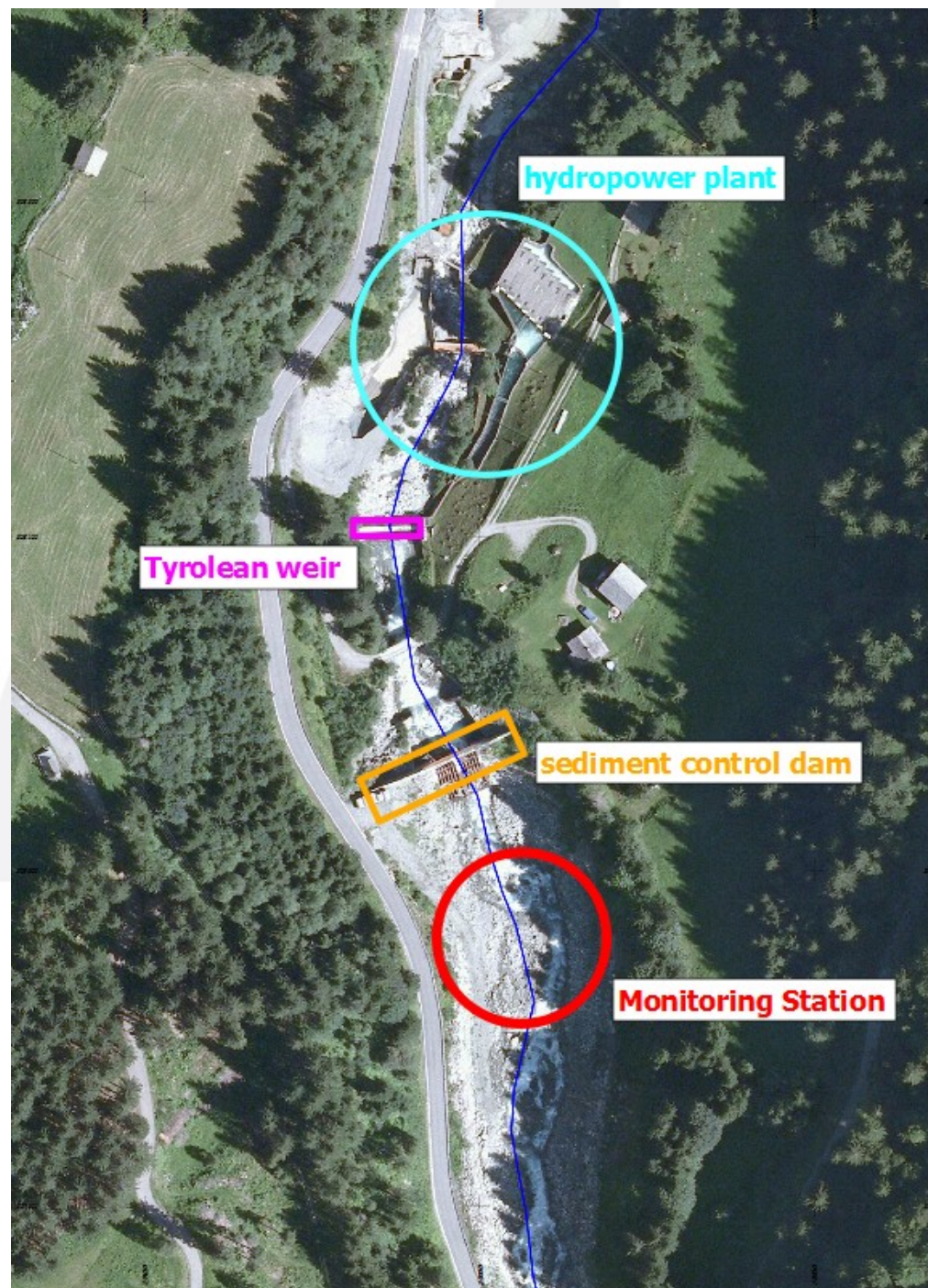
- Geologically, the municipality of St. Gallenkirch is located on Silvretta Crystalline, which belongs to the upper layer of the Eastern Alps. Biotite-gneiss, muscovite granite-gneiss, amphibolite and hornblende gneiss may be found here.
- The catchment area itself consists of various gneiss and mica shists that are locally strongly weathered, giving rise to debris of a relatively young age, which, together with the older debris which is also present, constitute the main debris sources.

Hydrology

- The municipality of St. Gallenkirch is located in the maritime climatic region of the northern fringes of the Alps. The average annual precipitation amounts to 1297 mm, with a daily maximum of approximately 98 mm (21.12.1991).
- Gauging station. St. Gallenkirch [860 m a.s.l.]

General description of monitoring site

- The Suggadin torrent arises through the confluence of the Vergaldner- and Valzifenz torrents. Whereas the former drains the Vergaldner valley and has its source below the Rotbühelpeak (2852 m), the latter drains the waters of the Winter valley with their confluence below the Valzifenzridge. The NW orientated catchment area has a surface area of approximately 75 km² and a peak discharge HQ₁₅₀ of 156 m³/s.
- The Check dam is currently being constructed (forming and concreting), into which the measuring system will be incorporated.
- Downstream (approximately 200 m) the Monitoring Station there is the hydropower plant from the Illwerke PLC of Vorarlberg arranged.



Sediment management in Alpine basins