



# Pilot Area Lienz - Isel

University of Natural Resources and Life Sciences,  
Vienna  
Institute of Water Management, Hydrology and  
Hydraulic Engineering



[www.sedalp.eu](http://www.sedalp.eu)

## Bedload Monitoring Station Lienz – Isel

### • *Geographical Position*

Country:	Austria
Federal State:	Tyrol 
City:	Lienz
River:	Isel

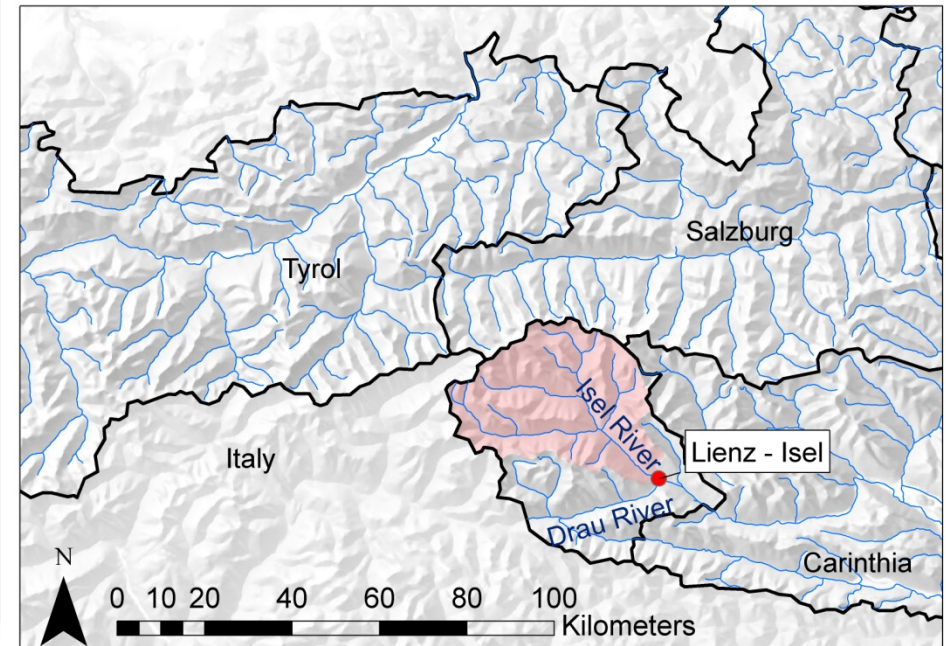


Source: digHAO (Version 3.0.2)

## Bedload Monitoring Station Lienz – Isel

### • *General Data of the River-Basin*

Catchment Size [km <sup>2</sup> ]:	1198.7
Slope [mm <sup>-1</sup> ]:	0.0035
Height above sea level [m]:	667.20
Mean flow [m <sup>3</sup> s <sup>-1</sup> ]:	38.9
Highest occurring flow [m <sup>3</sup> s <sup>-1</sup> ]:	720 (03.09.1965)
Lowest occurring flow [m <sup>3</sup> s <sup>-1</sup> ]:	3.00 (04.03.1963)
Time series:	(1951-2009)



Source: digHAO (Version 3.0.2)

## Bedload Monitoring Station Lienz – Isel

### • *Applied Bedload Measurement Methods*

- Mobile Bedload Sampler
- Geophone device



Basket Sampler



Basket Sampler



Geophone Device