

Pilot Area Lienz - Drau

University of Natural Resources and Life Sciences,
Vienna
Institute of Water Management, Hydrology and
Hydraulic Engineering



www.sedalp.eu

Bedload Monitoring Station Lienz – Drau

• *Geographical Position*

Country:	Austria
Federal State:	Tyrol 
City:	Lienz
River:	Drau

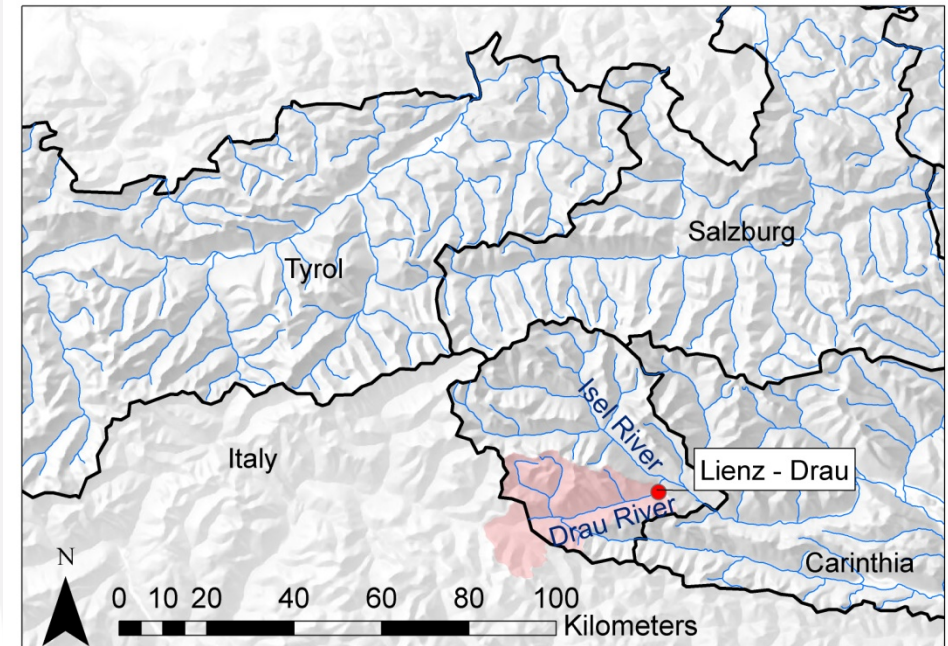


Source: digHAO (Version 3.0.2)

Bedload Monitoring Station Lienz – Drau

• *General Data of the River-Basin*

Catchment Size [km ²]:	668.0
Slope [mm ⁻¹]:	0.0025
Height above sea level [m]:	679.87
Mean flow [m ³ s ⁻¹]:	13.4
Highest occurring flow [m ³ s ⁻¹]:	156 (07.10.1998)
Lowest occurring flow [m ³ s ⁻¹]:	1.5 (23.12.1998)
Time series:	(1988-2009)



Source: digHAO (Version 3.0.2)

Bedload Monitoring Station Lienz – Drau

• *Applied Bedload Measurement Methods*

- Mobile Bedload Sampler
- Geophone device



Geophone Device



Basket Sampler



Geophone Device