



# Pilot Area Dellach-Drau


University of Natural Resources and Life Sciences,  
Vienna  
Institute of Water Management, Hydrology and  
Hydraulic Engineering



[www.sedalp.eu](http://www.sedalp.eu)

## Bedload Monitoring Station Dellach – Drau

### • *Geographical Position*

Country:	Austria
Federal State:	Carinthia 
Village:	Dellach im Drautal
River:	Drau



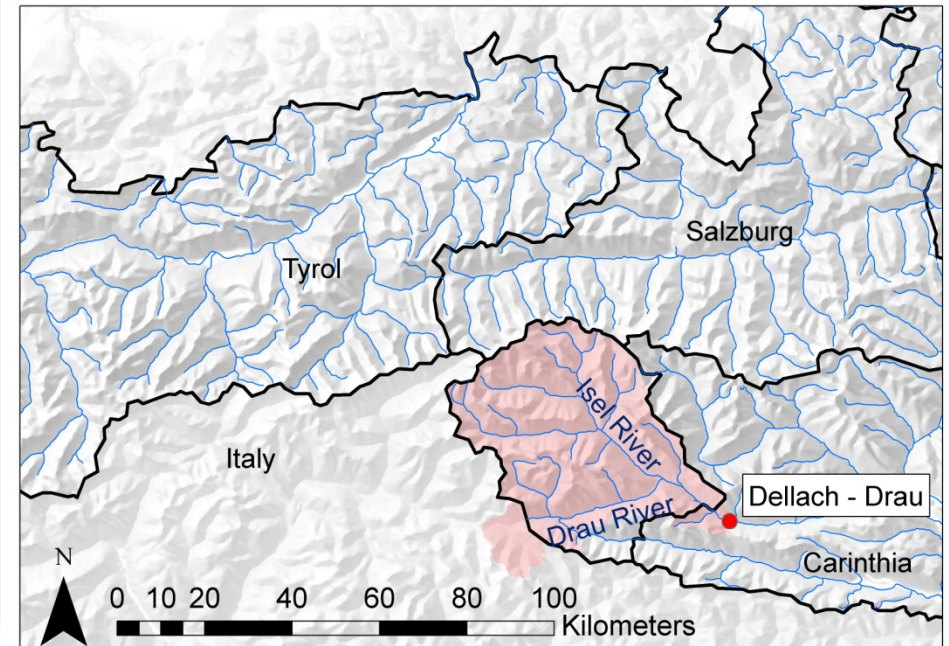
Source: digHAO (Version 3.0.2)

## Bedload Monitoring Station Dellach – Drau

### • *General Data of the River-Basin*

Catchment Size [km <sup>2</sup> ]:	2112.0
Slope [mm <sup>-1</sup> ]:	0.0019
Height above sea level [m]:	600.04
Mean flow [m <sup>3</sup> s <sup>-1</sup> ]:	62.6*
Highest occurring flow [m <sup>3</sup> s <sup>-1</sup> ]:	850 (03.09.1965)*
Lowest occurring flow [m <sup>3</sup> s <sup>-1</sup> ]:	8.47 (13.02.1999)*
Time series:	(1898-2009)*

\*Data of gauging station Oberdrauburg



Source: digHAO (Version 3.0.2)



## Bedload Monitoring Station Dellach – Drau

### • *Applied Bedload Measurement Methods*

- Mobile Bedload Sampler
- Bedload traps
- Geophone device



Basket Sampler



Geophone Device



Bedload Traps